

All 2014 data is preliminary

## 2013-14 Anchorage School District: Destination 2020

*Destination 2020* is the Anchorage School District and Anchorage School Board's comprehensive, multi-year plan to increase student achievement, graduation rate, attendance, school recommendation and safety by the year 2020. The school level *Destination 2020* reports were created in order to provide data that presents school progress toward meeting the board goals and measures within the Destination 2020 initiative.

Performance measures:

Goal 1 – 90 percent of students will be proficient in reading, writing and math.

Measure A. Student proficiency

Measure B. Achievement gap with economically disadvantaged students

Measure C. Annual growth

Goal 2 – 90 percent of students will graduate high school.

Measure A. Graduation

Measure B. Dropout Rate

Goal 3 – Every student will attend school at least 90 percent of the time

Measure A. Attendance

Goal 4 – 90 percent of parents will recommend their child's school to others

Measure A. Parent recommendation

Measure B. Student recommendation

Goal 5 – 100 percent of students and staff will feel safe at school.

Measure A. Student safety

Measure B. Staff safety

Goal 6 – Operational Efficiency

Measure A. Facility Condition

Measure B. District Operations Performance

### Table shading key

Green shading



Target met

Yellow shading



Improvement made

Red shading



Target not met



# 2013-14 Anchorage School District: Destination 2020

Goal 1

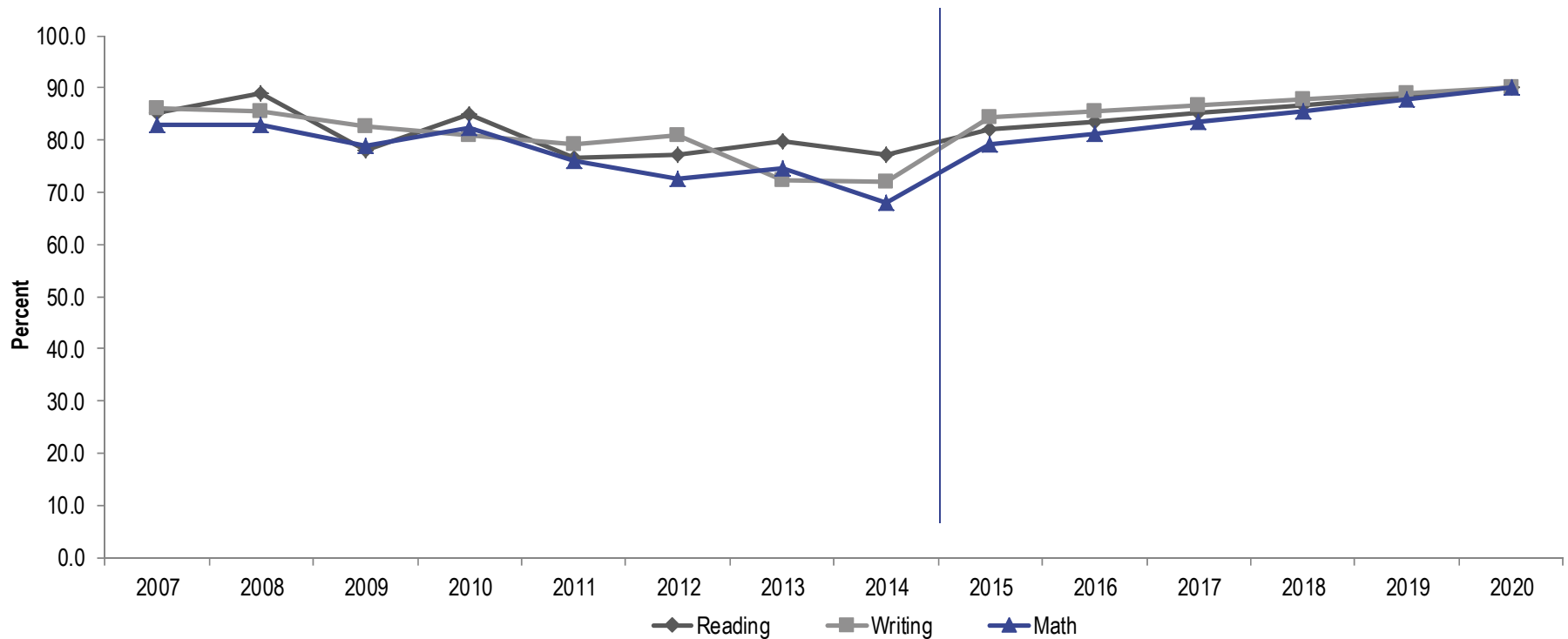
## Goal 1 – 90 percent of students will be proficient in reading, writing and math.

Measure A. Student proficiency; measured by the Standards Based Assessment

Percentage of students proficient in reading, writing and math

● Target not met ● Improvement ● Target met

	Actual								Target						
	2007	2008	2009	2010	2011	2012	2013	2014	2014	2015	2016	2017	2018	2019	2020
Reading	85.2	89.0	78.1	85.0	76.7	77.3	79.8	77.1	80.5	82.1	83.7	85.2	86.8	88.4	90.0
Writing	86.1	85.5	82.7	81.1	79.2	81.0	72.3	72.0	83.3	84.4	85.5	86.6	87.8	88.9	90.0
Math	82.8	82.8	78.9	82.4	76.0	72.6	74.5	68.0	77.0	79.1	81.3	83.5	85.7	87.8	90.0



Scale varies.  
Suppressed data has been removed from the graph.

Goal 2

Goal 3

Goal 4

Goal 5

Goal 6

# 2013-14 Anchorage School District: Destination 2020

Goal 1

## Goal 1 – 90 percent of students will be proficient in reading, writing and math

Measure A. Student proficiency; measured by the Standards Based Assessment

Percentage of students proficient in reading, writing and math by grade level served

● Target not met   
 ● Improvement   
 ● Target met

Goal 2

### Reading

	Actual								Target						
	2007	2008	2009	2010	2011	2012	2013	2014	2014	2015	2016	2017	2018	2019	2020
Grade 3	*	93.9	76.1	89.8	72.6	86.3	82.4	68.9	87.2	87.7	88.1	88.6	89.1	89.5	90.0
Grade 4	82.9	*	76.3	81.0	80.4	71.0	77.6	73.5	75.7	78.1	80.5	82.9	85.2	87.6	90.0
Grade 5	75.9	89.6	79.6	87.0	76.0	88.9	74.6	86.4	89.2	89.3	89.4	89.6	89.7	89.9	90.0
Grade 6	88.7	76.5	80.9	82.2	78.3	64.2	85.2	79.4	70.6	73.8	77.1	80.3	83.5	86.8	90.0

Goal 3

### Writing

	Actual								Target						
	2007	2008	2009	2010	2011	2012	2013	2014	2014	2015	2016	2017	2018	2019	2020
Grade 3	*	90.9	82.1	85.7	77.0	84.6	72.5	71.1	86.0	86.6	87.3	88.0	88.7	89.3	90.0
Grade 4	90.0	*	78.9	79.4	90.2	85.5	67.3	77.1	86.6	87.2	87.7	88.3	88.9	89.4	90.0
Grade 5	77.6	83.6	87.8	79.7	72.0	88.9	71.2	77.3	89.2	89.3	89.4	89.6	89.7	89.9	90.0
Grade 6	82.3	72.5	83.8	80.4	78.3	64.2	77.8	65.1	70.6	73.8	77.1	80.3	83.5	86.8	90.0

Goal 4

Goal 5

### Math

	Actual								Target						
	2007	2008	2009	2010	2011	2012	2013	2014	2014	2015	2016	2017	2018	2019	2020
Grade 3	91.7	88.1	80.6	*	68.9	72.5	84.0	62.2	76.9	79.1	81.3	83.5	85.6	87.8	90.0
Grade 4	84.5	91.5	75.0	77.8	94.1	77.4	67.3	77.1	80.6	82.1	83.7	85.3	86.9	88.4	90.0
Grade 5	77.6	77.9	83.7	79.7	66.7	81.5	76.3	70.5	83.6	84.7	85.7	86.8	87.9	88.9	90.0
Grade 6	79.0	74.5	77.9	78.3	75.7	57.7	70.4	63.5	65.8	69.8	73.8	77.9	81.9	86.0	90.0

Goal 6

\*Data is suppressed based on DEED protocol.

# 2013-14 Anchorage School District: Destination 2020

Goal 1

## Goal 1 – 90 percent of students will be proficient in reading, writing and math

Measure B. Achievement gap with economically disadvantaged students; measured by the Standards Based Assessment

Goal 2

Percentage point gap between Economically Disadvantaged Students and Non-Economically Disadvantaged Students

● Target not met ● Improvement ● Target met

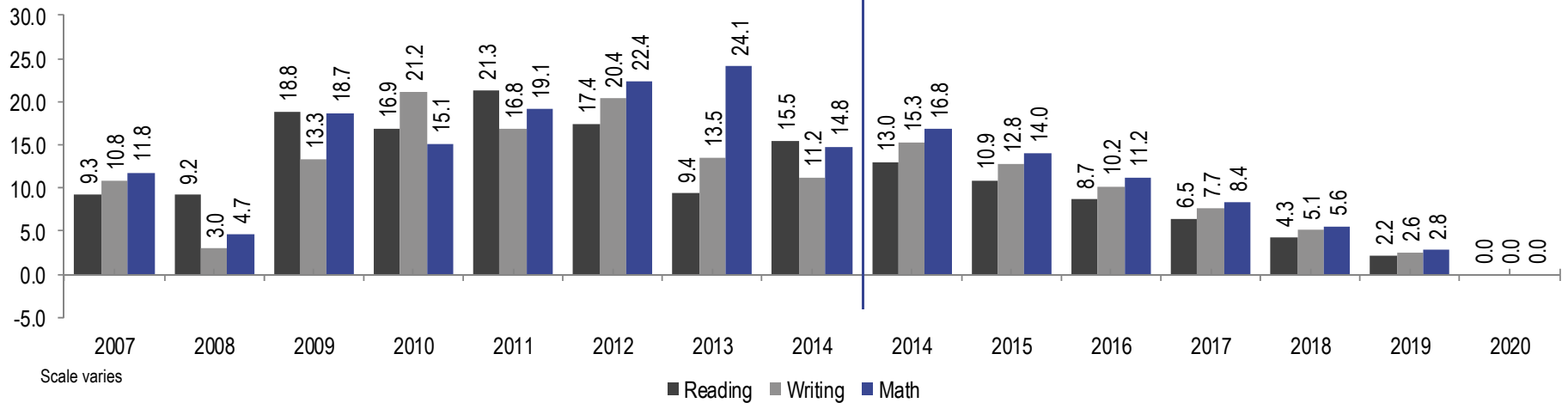
Goal 3

	Actual								Target						
	2007	2008	2009	2010	2011	2012	2013	2014	2014	2015	2016	2017	2018	2019	2020
Reading	9.3	9.2	18.8	16.9	21.3	17.4	9.4	15.5	13.0	10.9	8.7	6.5	4.3	2.2	0.0
Writing	10.8	3.0	13.3	21.2	16.8	20.4	13.5	11.2	15.3	12.8	10.2	7.7	5.1	2.6	0.0
Math	11.8	4.7	18.7	15.1	19.1	22.4	24.1	14.8	16.8	14.0	11.2	8.4	5.6	2.8	0.0

\*Data is suppressed based on DEED protocol.

Positive numbers indicate that non-Economically Disadvantaged Students are out performing Economically Disadvantaged Students, while negative numbers indicate that Economically Disadvantaged students are out performing non-Economically Disadvantaged Students.

Goal 4



Goal 6

# 2013-14 Anchorage School District: Destination 2020

## Lake Hood Elementary School

- Goal 1
- Goal 2
- Goal 3
- Goal 4
- Goal 5
- Goal 6

### Goal 1 – 90 percent of students will be proficient in reading, writing and mathematics

Measure C. Annual growth; measured by the Alaska Department of Education and Early Development's Growth and Proficiency Index (ASPI)

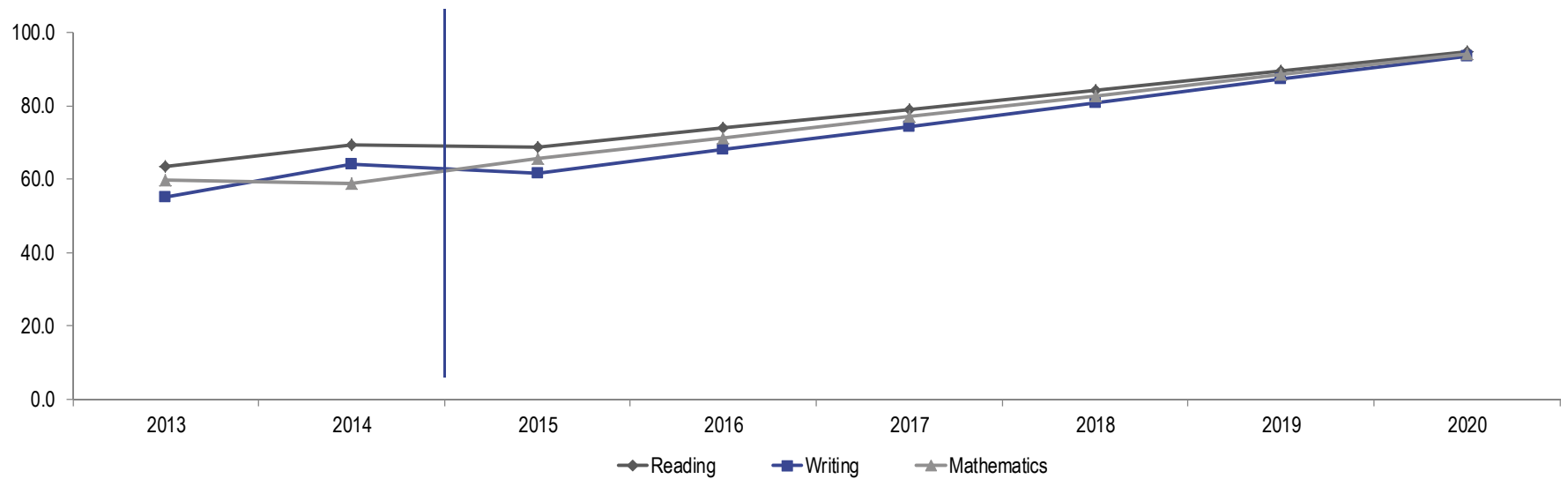
Percentage of students who scored 100 or more index points

● Target not met    
 ● Improvement    
 ● Target met

	Actual		Targets						
	2013	2014	2014	2015	2016	2017	2018	2019	2020
Reading	63.5	69.3	68.7	73.9	79.1	84.3	89.6	94.8	100.0
Writing	55.2	64.0	61.6	68.0	74.4	80.8	87.2	93.6	100.0
Mathematics	59.7	58.7	65.5	71.2	77.0	82.7	88.5	94.2	100.0

Note: According to the Alaska Department of Education & Early Development's Growth and Proficiency Index, a student receives at least 100 index points if the student has made expected growth over two consecutive years. Above, shows the percentage of students who scored 100 or more index points. To be included, the student must receive a valid subject score on the SBA in both the current year and the prior year, be enrolled in the same school for the full academic year and progress one grade level compared to the previous year.

\*Data is suppressed based on DEED protocol.



## 2013-14 Anchorage School District: Destination 2020

Lake Hood Elementary School

Goal 1

### Goal 2 – 90 percent of students will graduate high school

Measure A. Graduation; measured by state calculations

Measure B. Dropout Rate; measured by state calculations

Goal 2

Goal 3

Goal 4

Goal 5

Goal 6

Goal 2 only applies to schools with students in grades 7-12.

# 2013-14 Anchorage School District: Destination 2020

## Lake Hood Elementary School

Goal 1

### Goal 3 – Every student will attend school at least 90 percent of the time

Measure A. Attendance; measured by student presence.

Goal 2

Percentage of students in attendance 90 percent of the time by grade level

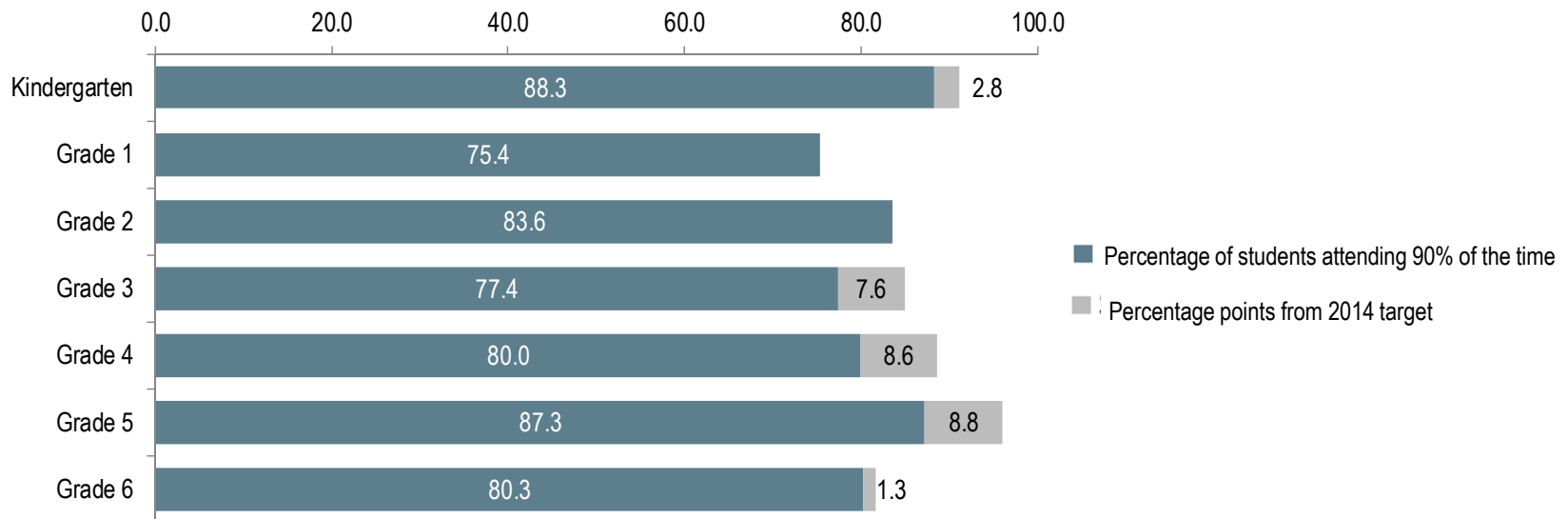
● Target not met ● Improvement ● Target met

Goal 3

	Actual					Target						
	2010	2011	2012	2013	2014	2014	2015	2016	2017	2018	2019	2020
Kindergarten	71.7	77.2	88.1	84.6	88.3	91.1	92.6	94.1	95.6	97.0	98.5	100.0
Grade 1	89.3	67.8	65.5	87.0	75.4	74.1	78.4	82.7	87.0	91.4	95.7	100.0
Grade 2	80.3	85.2	71.7	80.0	83.6	78.8	82.3	85.8	89.4	92.9	96.5	100.0
Grade 3	86.0	74.3	80.0	79.6	77.4	85.0	87.5	90.0	92.5	95.0	97.5	100.0
Grade 4	92.8	81.0	84.8	83.9	80.0	88.6	90.5	92.4	94.3	96.2	98.1	100.0
Grade 5	88.0	83.3	94.7	84.8	87.3	96.1	96.7	97.4	98.0	98.7	99.3	100.0
Grade 6	90.0	81.8	75.4	83.6	80.3	81.6	84.6	87.7	90.8	93.9	96.9	100.0

Goal 4

Percentage of students in attendance 90 percent or greater of the time by grade level



Goal 5

Goal 6

# 2013-14 Anchorage School District: Destination 2020

Goal 1

## Measure A. Parent recommendation; measured by School Climate and Connectedness Survey

Percentage of parents who recommend their child's school to others

● Target not met   
 ● Improvement   
 ● Target met

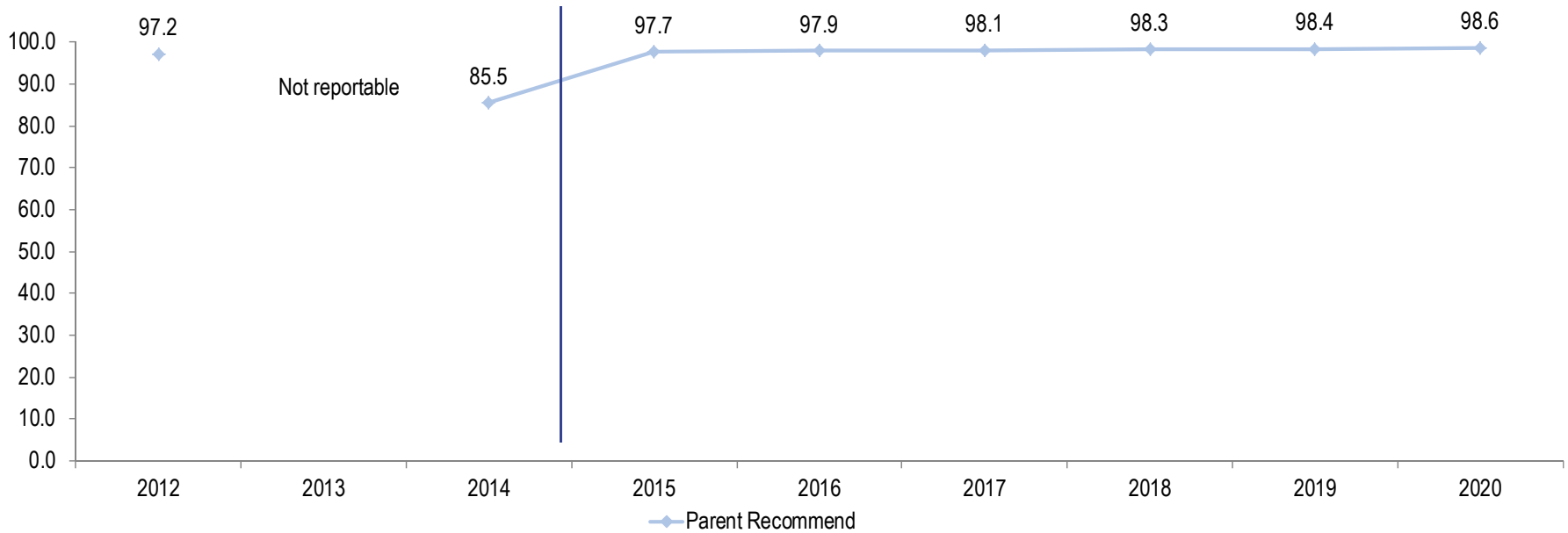
Goal 2

	Actual			Target						
	2012	2013	2014	2014	2015	2016	2017	2018	2019	2020
Parents Recommend	97.2	NR	85.5	97.6	97.7	97.9	98.1	98.3	98.4	98.6

Note: Schools that are not reportable (NR) did not have enough total responses to provide a strong sample. Results represent the percentage of parents who turned in the Climate and Connectedness survey and indicated they "strongly agree" or "agree" on the following question, "I would recommend my child's school to others."

Goal 3

Goal 4



Goal 5

Goal 6



# 2013-14 Anchorage School District: Destination 2020

Goal 1

## Measure B. Student recommendation; measured by School Climate and Connectedness Survey

Percentage of students who would recommend their school to others

● Target not met   
 ● Improvement   
 ● Target met

Goal 2

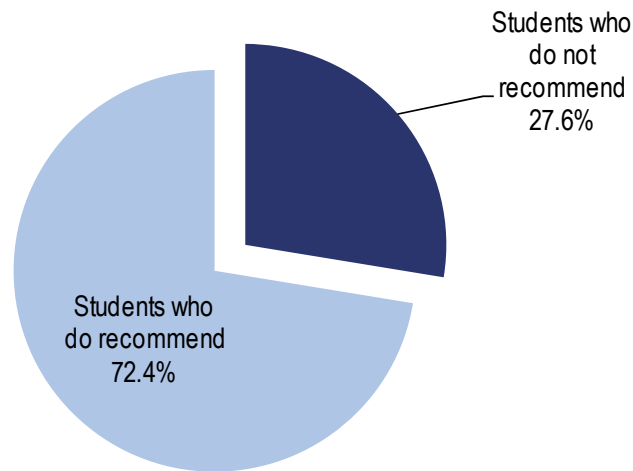
	Actual		Target						
	2013	2014	2014	2015	2016	2017	2018	2019	2020
Grades 3-4	NR	72.4	12.9	25.7	38.6	51.4	64.3	77.1	90.0
Grades 5-12	76.5	82.4	78.4	80.3	82.3	84.2	86.1	88.1	90.0

Goal 3

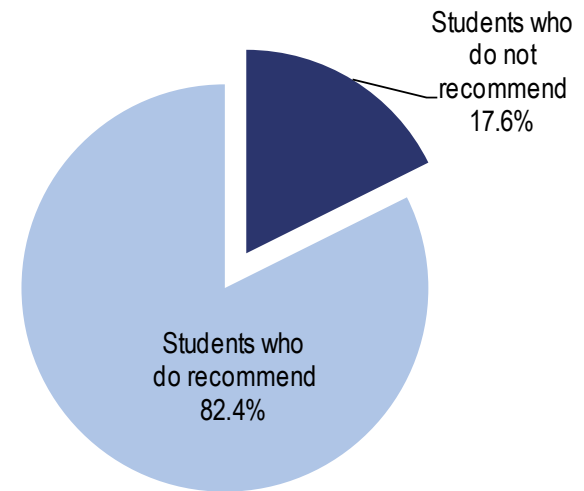
Note: Schools that are not reportable (NR) did not have enough total responses to provide a strong sample.  
 Grade 3-4 results represent the percentage of students who turned in the Climate and Connectedness Survey and indicate "yes" on the question: "I think other students would like going to my school".  
 Grade 5-12 results represent the percentage of students who turned in the Climate and Connectedness Survey and indicate that they "strongly agree" or "agree on the following question: "I would recommend my school to other students."

Goal 4

Students, Grades 3-4



Students, Grades 5-12



Goal 5

Goal 6

# 2013-14 Anchorage School District: Destination 2020

- Goal 1
- Goal 2
- Goal 3
- Goal 4
- Goal 5
- Goal 6

## Goal 5 – 100 percent of students and staff will feel safe at school

Measure A. Student Safety; measured by the School Climate and Connectedness Survey

Percentage of students who feel safe at school

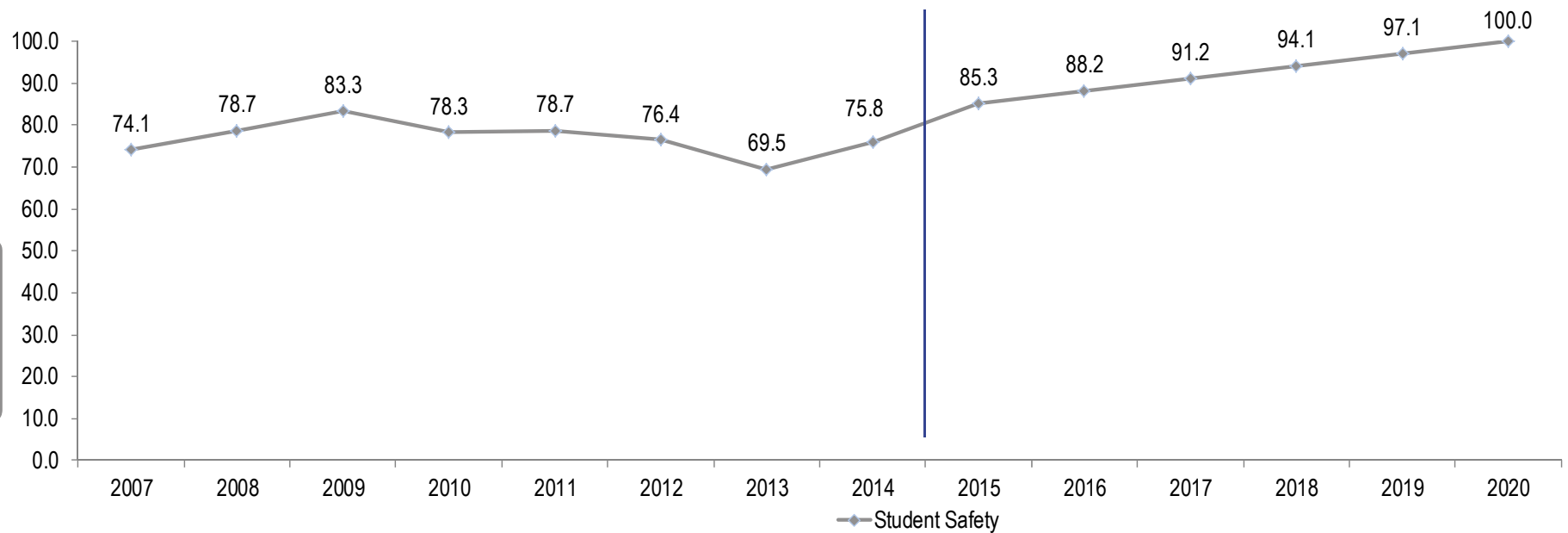
● Target not met   
 ● Improvement   
 ● Target met

	Actual								Target							
	2007	2008	2009	2010	2011	2012*	2013	2014	2014	2015	2016	2017	2018	2019	2020	
Student Safety	74.1	78.7	83.3	78.3	78.7	76.4	69.5	75.8	82.3	85.3	88.2	91.2	94.1	97.1	100.0	

\*Prior to 2012, the school safety question was not asked on the grade 3-4 survey. Data for 2012-present represents the surveys for students in grades 3-12.

Note: Schools that are not reportable (NR) did not have enough total responses to provide a strong sample.

Results represent the percentage of students who turned in the Climate and Connectedness Survey and indicated “yes” (grades 3-4) or “strongly agree/agree” (grades 5-12) on the following question: “I feel safe at my school.”



# 2013-14 Anchorage School District: Destination 2020

Goal 1

## Goal 5 – 100 percent of students and staff will feel safe at school

Measure B. Staff Safety; measured by the School Climate and Connectedness Survey

Percentage of staff who feel safe at school

- Target not met
- Improvement
- Target met

Goal 2

	Actual								Target						
	2007	2008	2009	2010	2011	2012	2013	2014	2014	2015	2016	2017	2018	2019	2020
Staff Safety	93.2	NR	89.7	88.9	93.6	NR	NR	46.2	95.2	96.0	96.8	97.6	98.4	99.2	100.0

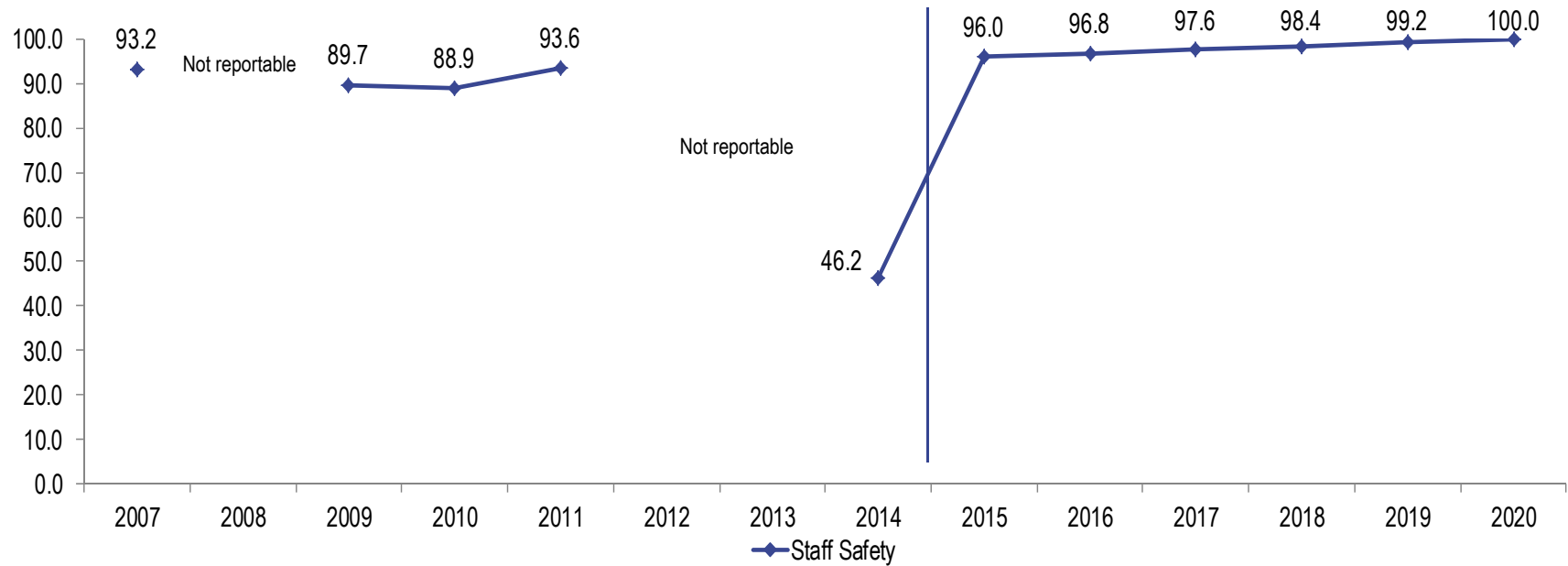
Note: Results represent the percentage of staff who turned in the Climate and Connectedness Survey and indicated they “strongly agree” or “agree on the following question: “I feel safe at my school.” Schools that are not reportable (NR) did not have enough total responses to provide a strong sample.

Goal 3

Goal 4

Goal 5

Goal 6



## 2013-14 Anchorage School District: Destination 2020

Goal 1

### Goal 6 – Operational Efficiency

Measure A. Facility Condition; measured by Facility Condition Index

The Facility Condition Index (FCI) data will be provided in the 2014-15 Destination 2020 report.

Previous years FCI reports can be found here:

[www.asdk12.org/facilities/fcar/](http://www.asdk12.org/facilities/fcar/)

Goal 2

Goal 3

Goal 4

Measure B. District Operations Performance; measured by the Council of Great City School's (CGCS) Power Indicators/Key Performance Indicators

The Council of Great City Schools has identified specific power indicators under the four areas defined as operational efficiency measures by the CGCS: Food Services, Maintenance and Operations, Safety and Security, and Transportation. These power indicators were determined by an advisory committee referred to as the KPI technical team, composed of directors and chief officers from the various school districts in the Council. Almost all cost measures are adjusted by a Cost of Living Index in order to make the district's data more comparable to the benchmarks. Data based on KPI Indicator Report on 2014-07-10.

Goal 5

The CGCS Power indicators/Key Performance Indicators are only reported at the district level.

Please refer to the Destination 2020: Anchorage School District Report for this data.

Goal 6

# 2013-14 Anchorage School District: Destination 2020

## Appendix

### Suppressions and Targets

Data suppressed – In cases where data is suppressed, the data cannot be reported due to the Alaska Department of Education and Early Development (DEED) reporting protocol. For more information visit: [http://education.alaska.gov/tls/assessment/pdf\\_files/2levelreportingprotocol.pdf](http://education.alaska.gov/tls/assessment/pdf_files/2levelreportingprotocol.pdf)

Target setting – Targets were set based on the 2012 data, unless on of the following circumstances occur:

1. If the data is above the 2020 target (i.e. if the 2020 target is at or above 90% and the 2012 data was 90.2%, targets will be adjusted to a new 2020 target using the same calculation.
2. If the 2012 data is suppressed, targets will be set on a average of three of the most recent historical years.
3. If the 2012 data is not reportable (NR), targets were set from the most recently available data point. If all data points are not reportable, targets are set from 0% in order to provide the school with a target in the future.

Legend	
AF AM	African-American
AKNA/AI	Alaska Native/American Indian
Asian	Asian
NH/OPI	Native Hawaiian/Other Pacific Islander
Caucasian	Caucasian
Hispanic	Hispanic
2 or More	2 or More Races
EDS	Economically Disadvantaged Students
SWD	Students with Disabilities
LEP	Limited English Proficient
Female	Female
Male	Male
*	Data suppressed
N/A	No students

## 2013-14 Anchorage School District: Destination 2020

## Appendix

### Calculations and Definitions

#### Goal 1a - Student proficiency

Proficient: The ability to perform at or above grade level expectation. A proficient score on the Standards Based Assessment (SBA) is 300 or higher.

Standards Based Assessment (SBA): designed to estimate the degree to which students in grades 3-10 have mastered the Academic Performance Standards for reading, writing and mathematics. This test combined with other information from classroom and local assessments, provides the district with valuable student performance data and degrees of mastery.

#### Goal 1b – Achievement gap of economically disadvantaged students

Achievement Gap: the difference between the academic achievements of two groups of students. In Destination 2020, the achievement between economically disadvantaged students (EDS) and non-economically disadvantaged students (non-EDS) is compared.

Economically Disadvantaged Students (EDS): a subgroup of students classified as being eligible to participate in the free and reduced lunch program. For comparison purposes, the Anchorage School District disaggregates the test scores of EDS and non-EDS, as required by the Elementary and Secondary Act (ESEA), in order to evaluate student achievement between the two student groups.

Eligibility: Free and reduced lunch program is determined by the income and eligibility levels set by the federal government. This includes: students who have met income guidelines, students in the Alaska Temporary Assistance Program file provided by the state, students in all Provision 3 schools, migrant students, students with a sibling(s) already in the program.

#### Goal 1c – Annual growth

Alaska State Proficiency Index (ASPI): In 2012-13, the Alaska Department of Education and Early Development's (DEED) developed a growth index using SBA proficiency data administered to students in grades 3-10. According to DEED's growth index, a student receives at least 100 index points if the student has made expected growth over two consecutive years. To be included, the student must receive a valid subject score on the SBA in both the current year and the prior year, be enrolled in the same school for the full academic year, and progress one grade level compared to the previous year.

# 2013-14 Anchorage School District: Destination 2020

## Appendix

### Calculations and Definitions

#### Goal 2a – Graduation Rate

Cohort: a group of students tracked over time.

Graduation Rate: the percentage of students who graduate high school. The graduation rate is currently calculated in two ways: the four-year cohort method and the five-year cohort method. The calculations of each method are detailed below.

#### **Old Method (used prior to 2008-09)**

# Full year 2009 Graduates + Summer 2010 Graduates

---

# Summer 2009 graduates +  
# Grade 9 unduplicated dropouts in full year 2006 +  
# Grade 10 unduplicated dropouts in full year 2007 +  
# Grade 11 unduplicated dropouts in full year 2008 +  
# Grade 12 continuing students (reported in full year 2009  
and including students with a certificate of achievement)

X 100

#### **Four-year Cohort (used after 2008-09)**

All students in the cohort population who receive a regular diploma in four years  
or less by the end of the 2013-14 school year

---

# first-time ninth graders in fall 2010 (starting cohort) +  
Students who transfer in –  
Students who transfer out, emigrate or die during the  
2010-11, 2011-12, 2012-13 and 2013-14 school years

#### **Five-year Cohort (used after 2008-09)**

All students in the cohort population who receive a regular diploma in five years  
or less by the end of the 2013-14 school year

---

# first-time ninth graders in fall 2009 (starting cohort) +  
Students who transfer in –  
Students who transfer out, emigrate or die during the  
2009-10, 2010-11, 2011-12, 2012-13 and 2013-14 school years

# 2013-14 Anchorage School District: Destination 2020

## Appendix

### Calculations and Definitions

#### Goal 2b – Dropout Rate

Dropout: a student in grades 7-12, who were enrolled at some time during the school year but ended that enrollment due to various reasons.

This does not include students who:

- Received a diploma from an approved state or district alternate education program
- Transferred to another public school district
- Transferred to a private school
- Transferred to a state or district alternate education program
- Students who are temporarily absent due to suspension
- Students who are absent due to illness or medical condition
- Students who died

Dropout rate: the percentage of students in grades 7-12 who drop out of school before completion. The calculation for annual dropout rate is detailed below.

$$\frac{\text{\# of dropouts (grades 7-12) in 2013-14}}{\text{\# students (grade 7-12) enrolled on October 1}}$$

#### Goal 3a - Attendance

Attendance by 90 percent of the days enrolled: the percentage of students who were present in school 90 percent or more of the time. For a student enrolled in the entire school year, that is the equivalent of being absent no more than 17.2 days of school. Students considered present include only those who are physically present at the school or who are engaged in school-related activities off campus (example: field trip).

The calculation for attendance by 90 percent of the days enrolled is detailed below.

#### Step 1

$$\frac{\text{Days student present}}{\text{Days student enrolled}} = \text{Student met or did not meet 90\% threshold}$$

#### Step 2

$$\frac{\text{\# of students meeting threshold}}{\text{Total \# of students}} = \text{Attendance by 90\%}$$



## 2013-14 Anchorage School District: Destination 2020

## Appendix

### Calculations and Definitions

#### Goal 4a – Parent Recommendation

Parent recommendation: results represent the percentage of parents who turned in the Climate and Connectedness Survey and indicated they “strongly agree” or “agree” on the following question: “I would recommend my child’s school to others”.

#### Goal 4b – Student Recommendation

Student recommendation: Grade 3-4 student results represent the percentage of students who turned in the Climate and Connectedness Survey and indicated “yes” on the following question: “I think other students would like going to my school.”

Grade 5-12 student results represent the percentage of students who turned in the Climate and Connectedness Survey and indicated “strongly agree” or “agree” on the following question: “I would recommend my school to other students.”

#### Goal 5a – Student Safety

Student safety: Results represent the percentage of students who turned in the Climate and Connectedness Survey and indicated “yes” (grade 3-4) or “strongly agree/agree” (grade 5-12) on the following question: “I feel safe at my school.”

#### Goal 5b – Staff Safety

Staff safety: results represent the percentage of staff who turned in the Climate and Connectedness Survey and indicated “strongly agree” or “agree” on the following question: “I feel safe at my school.”

#### Goal 6a – Facility Condition

Facility Condition Index: A percentage index derived from dividing the cost to correct building component/system needs by the facilities replacement costs.

#### Goal 6b – District Operations Performance

The Council of Great City Schools has identified specific power indicators under the four areas defined as operational efficiency measures by the CGCS : Food Services, Maintenance and Operations, Safety and Security, and Transportation. These power indicators were determined by an advisory committee referred to as the KPI technical team, composed of directors and chief officers from the various school districts in the Council. Almost all cost measures are adjusted by a Cost of Living Index in order to make the district’s data more comparable to the benchmarks. Data based on KPI Indicator Report on 2014-07-10.